

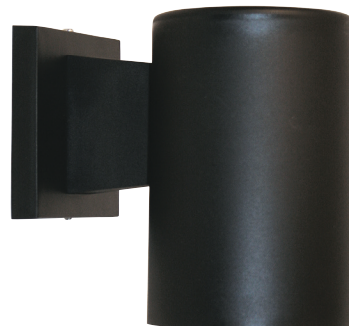
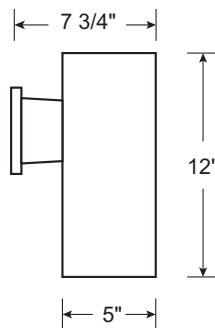
- Available in Incandescent & LED
- Turtle Safe & Dark Sky Friendly
- Fade & Rust Resistant Composite Construction
- UL Listed for Wet Locations
- Standard Pack QTY: 8

TURTLE & DARK SKY FRIENDLY



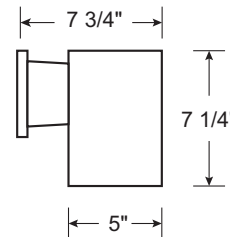
LS135

HCMT: 4 7/8"



LS134

HCMT: 2 3/8"



RoHS compliant



STYLE #	LIGHT SOURCE	BODY	OPTIONS
LS134	INCANDESCENT, MEDIUM BASE	BK-Black	LED LAMP, 120V, 3 YEAR WARRANTY, DIMMABLE, ENERGY STAR
LS135	I75-1 X 75W Max PAR 30	WH-White	LWE-A19/E26, 80CRI, 3000K LCE-A19/E26, 80CRI, 4000K AMBER LED CORN COB, 100-277V, 5 YEAR WARRANTY, FWC APPROVED LA-E26, 1600K, 590nm



*FLORIDA WILDLIFE APPROVED WHEN ORDERED WITH AMBER LAMP OPTION.

Scan the QR code to the left to access the Energy Star qualified product list.

Fixtures available with custom packaging options, assembled or knocked down. MOQs apply

For more information contact our sales department at 630-889-8100 or visit solutions4lighting.com