
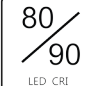




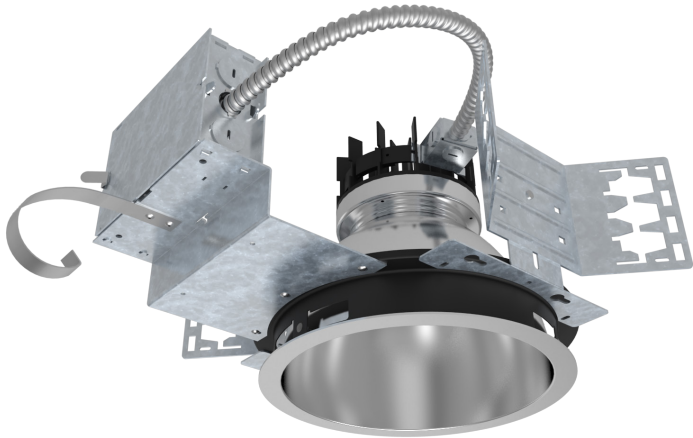
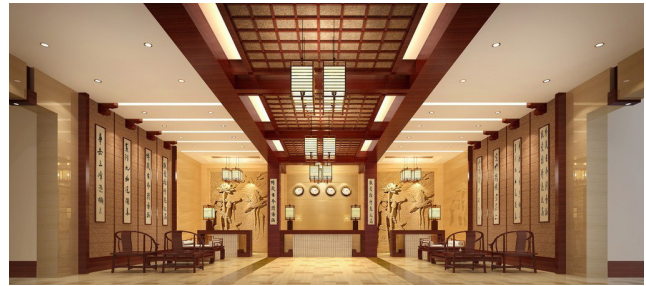


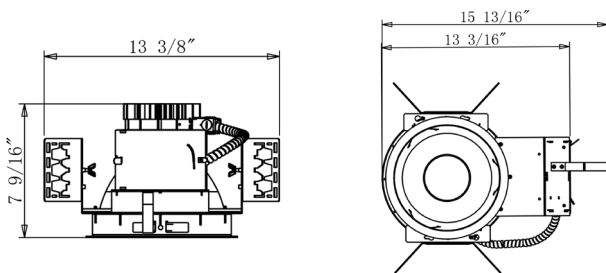
LS-L8-VA1

8" ARCHITECTURAL LED DOWNLIGHT

 DIMMING	 80 / 90 LED CRI	 120V / 277V Input Voltage	 25W / 37W / 50W Wattage	 2000Lm / 3000Lm / 4000Lm Lumen	 3000K / 4000K / 5000K CCT
--	---	---	---	--	---



DIMENSIONS



DESCRIPTION

Lighting is smooth and comfortable while using 50% less energy than the common CFL downlight.
Eco-friendly no lead or mercury
Designed to install into an existing downlights mounting frame and convert them into energy efficient LED downlights to save anywhere from 35% up to 75% on energy cost. Ideal suited for use in commercial, retail and other architectural applications Available with dedicated Emergency Battery Back-up

ELECTRICAL SYSTEM

Thermal protection guard protects the LED module from overheating and will dim LED module if necessary

JUNCTION BOX

Plaster frame integrated 29 cubic inch 0.064" thick galvanized steel Provided with four 1/2" knockouts, one 3/4" knockout and four Romex knockouts with true pryout slots and strain clamps.
Designed for straight through conduit runs.
Electrical connections are made through a single junction box door.
Green wire provided for installation with ground wire fed through PVC pipe conduit.

MOUNTING

Designed to install into an existing downlights mounting frame and convert them into energy efficient LED downlights.
Flex is designed to attach into existing junction box.
Vertically adjustable universal mounting brackets accept flat bar hangers, conduit or C channel.
The reflector assembly is held in with 4 "butter-fly" spring clips.
Reflector assy quickly attaches with lockable quick connect Hanger bars ordered separately.
Compatible with C-channel, flat bar wood joist bar hanger and EMT

DRIVER

The LED driver is mounted to the J-box cover and is accessible from below the ceiling.
Rated for 50Hz to 60Hz at 120V/277V input
Produces less than 20% THD

LISTING / WARRANTY

ETL listed to US and Canadian standards for damp location W/Feed through.
5 Years Limited Warranty.



ORDERING GUIDE / YOUR PRODUCT CODE

SERIES	INPUT VOLTAGE	LED AVAILABLE	WATTAGE / LUMEN	CCT	OPTIONS	- TRIM	LENS TYPE	Finish
○ LS-L8-VA1 8" Architectural Downlight	○ 120V	○ Cree	○ 25W / 2000 Lm	○ 3000K	○ Emergency Backup C-	○ Self Flanged	○ Lens Type	○ Clear
	○ 277V	○ Citizen	○ 37W / 3000 Lm	○ 4000K	○ Channel Bar Hanger Flat	○ Self Flanged White	○ Sand Blasted	○ Haze
	○ 120-277V	○ Epistar	○ 50W / 4000 Lm	○ 5000K	○ Bar Hanger Wood Joist Bar	○ NO Flange		○ White
	DIMMABLE	○ Seoul			○ Hanger			
	○ Non-Dimmable	○ Osram						
	○ Dimmable							

* Customized Also Available